



W  
WHITES

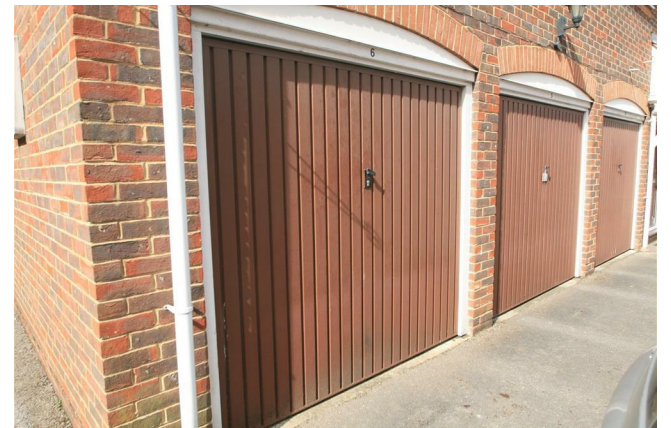
6 Three Cuppes Lane, St Edmunds Church Street, Salisbury, Wiltshire, SP1 1ER

£1,200 PCM

## About The Property

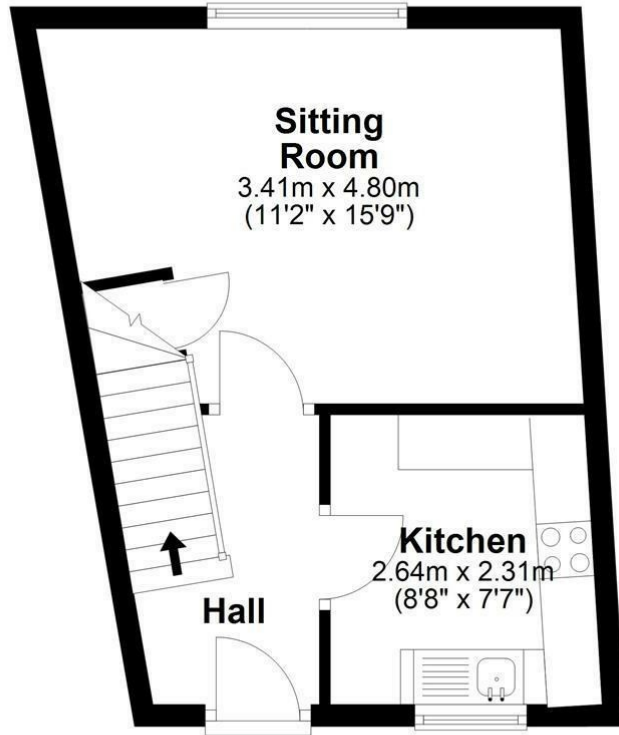
- Central Salisbury location
- Two double bedrooms
- Spacious sitting room/diner
- Fitted kitchen
- Modern shower room
- Large storage cupboard
- UPVC double glazing
- Electric heating
- Private single garage
- Communal gardens





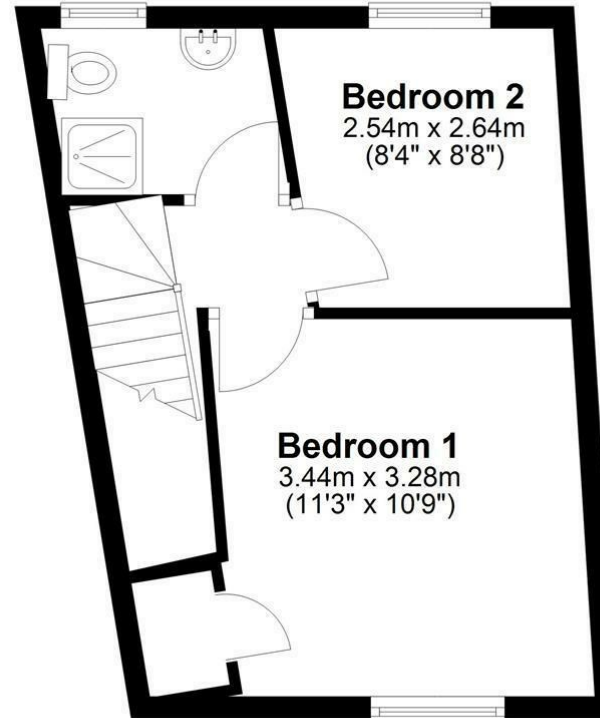
## Ground Floor

Approx. 27.2 sq. metres (293.2 sq. feet)



## First Floor

Approx. 26.5 sq. metres (285.0 sq. feet)



Total area: approx. 53.7 sq. metres (578.3 sq. feet)

## Further Information

Let available date: 25th May 2026  
NB: This date is provisional and will only be confirmed once referencing has been successfully completed.

Property type: House - End Terrace

Furnish type: Unfurnished

Deposit: £1,380

Local authority: Wiltshire Council

Council Tax: Band C

EPC: D(56)

### Energy Efficiency Rating

	Current	Potential
Very energy efficient - lower running costs		
(92 plus) <b>A</b>		
(81-91) <b>B</b>		<b>90</b>
(69-80) <b>C</b>		
(55-68) <b>D</b>	<b>56</b>	
(39-54) <b>E</b>		
(21-38) <b>F</b>		
(1-20) <b>G</b>		
Not energy efficient - higher running costs		
<b>England &amp; Wales</b>	EU Directive 2002/91/EC	